

Fig. 14: Elements in the landscape providing heat, fog, and water.



Fig. 15: Close up. Screen providing heat, water tap, nozzles releasing mist



Fig. 16: Winter view. The walking path is defined by the melting snow. A smaller bathtub with higher water temperature for one or two people bathing



Fig. 17: Summer view at night

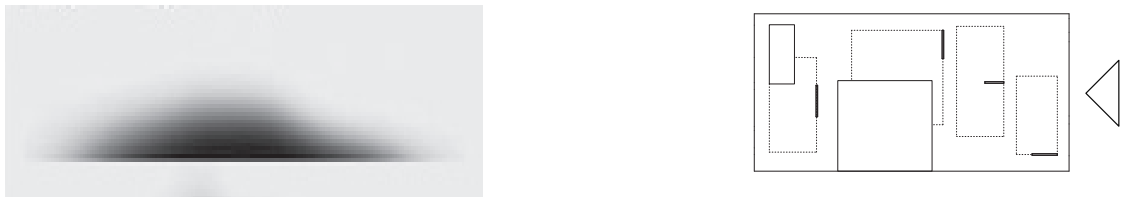


Fig. 18: Transversal Elevation

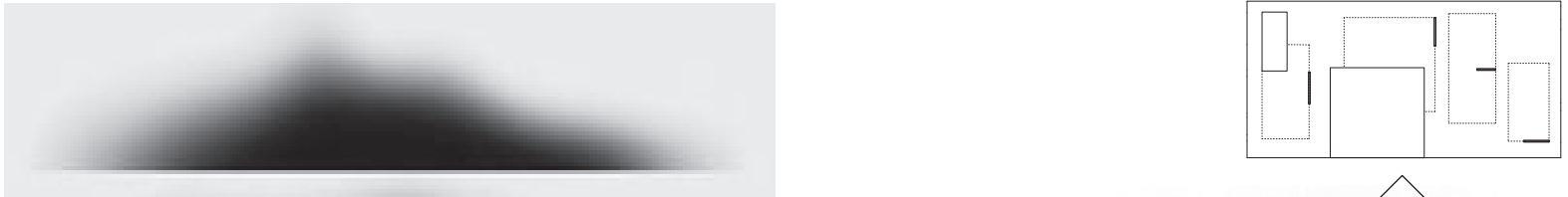


Fig. 19: Longitudinal Elevation

Scale 1:50

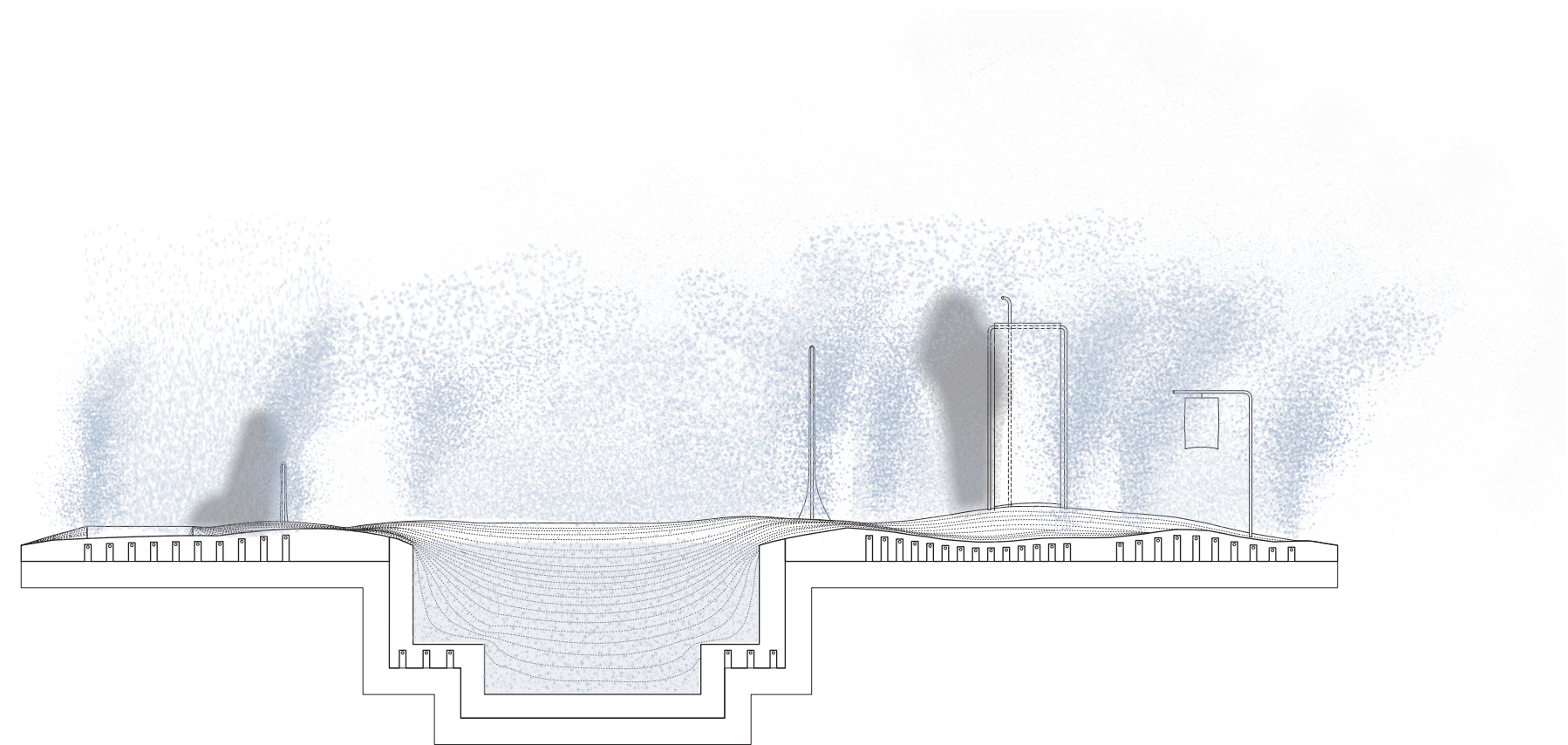


Fig. 20: Section A

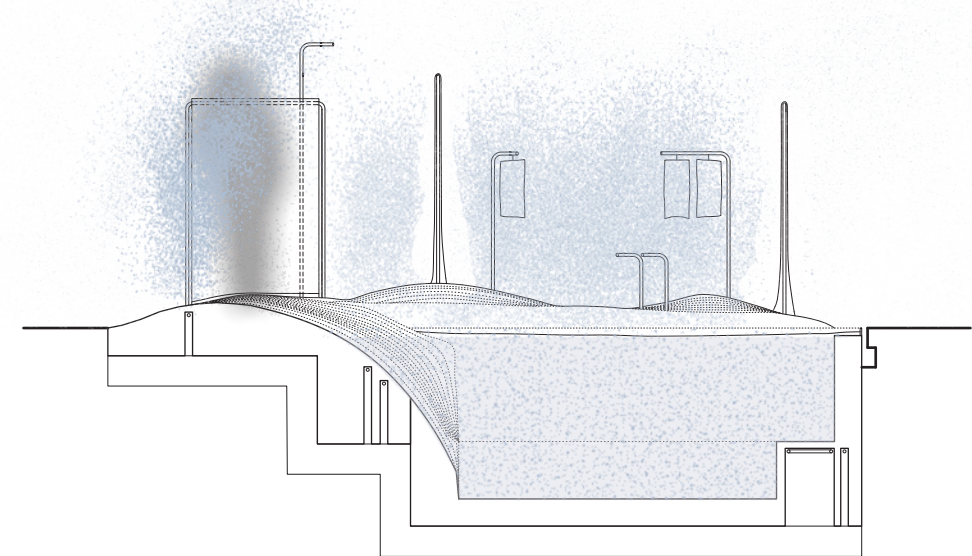


Fig. 21: Section B

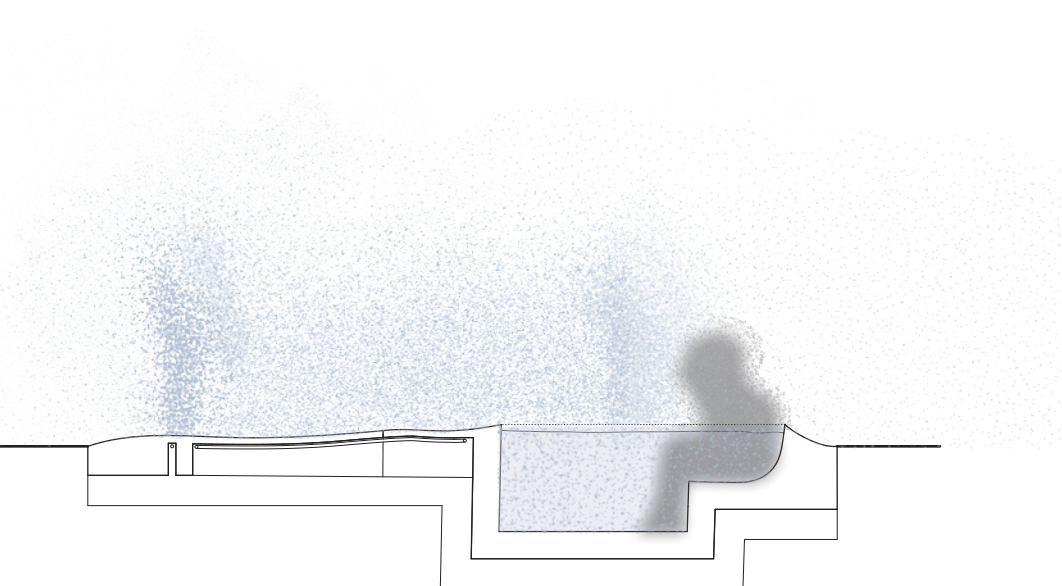


Fig. 22: Section C

Scale 1:50

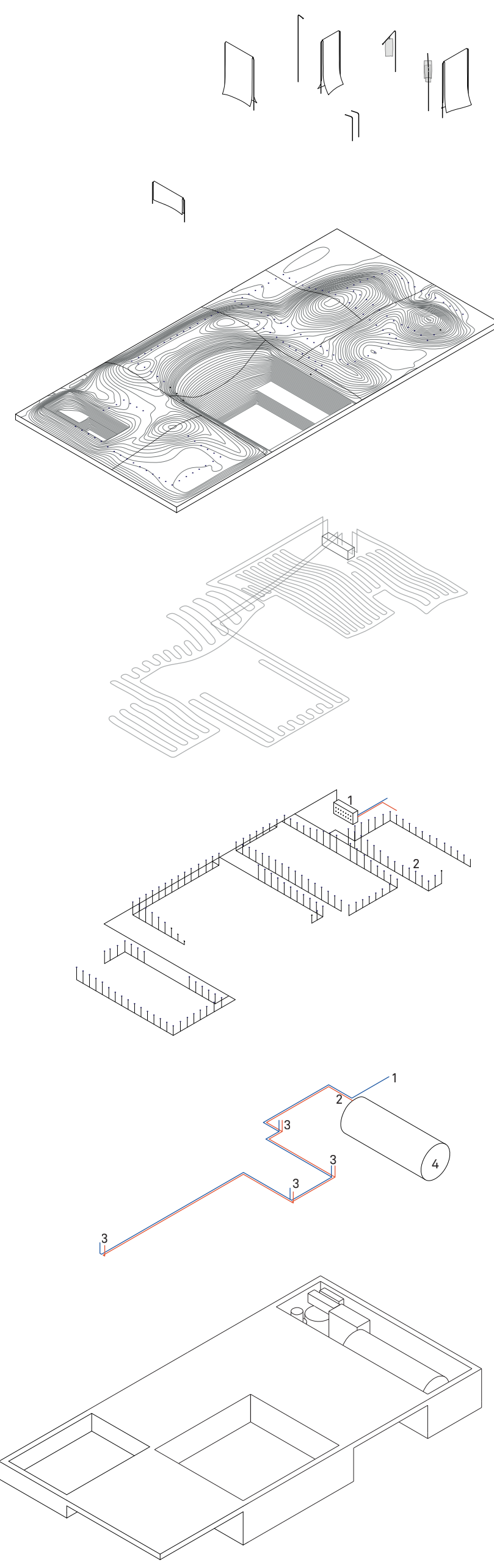
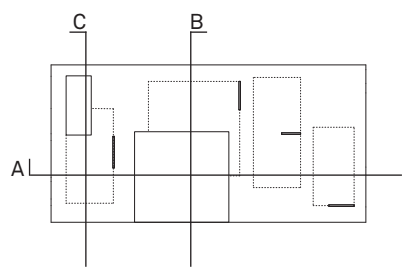


Fig. 23: Axo with all components

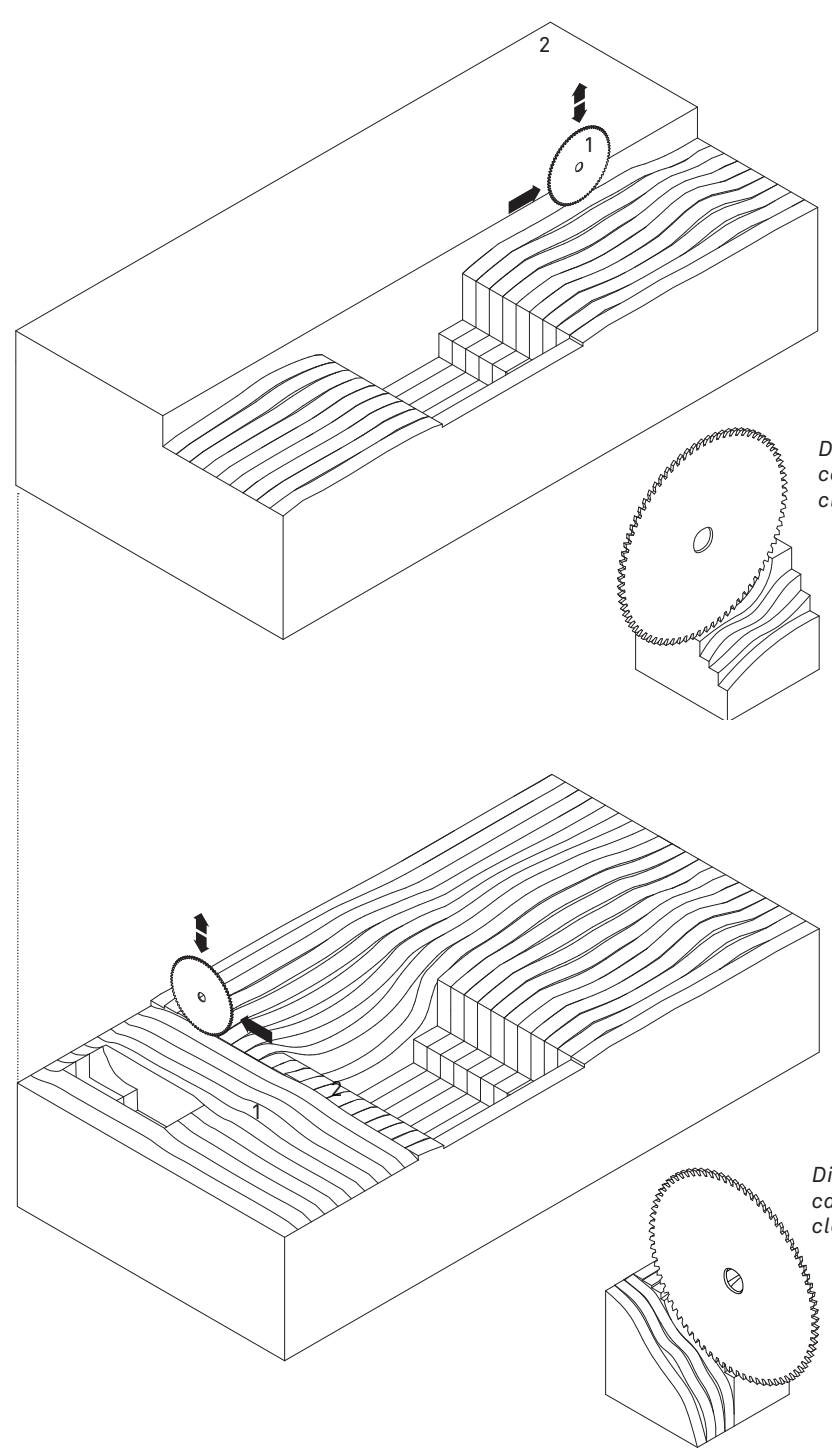


Fig. 24: Isometric view. Volcanic rock top face being carved with a band saw in both top and bottom faces

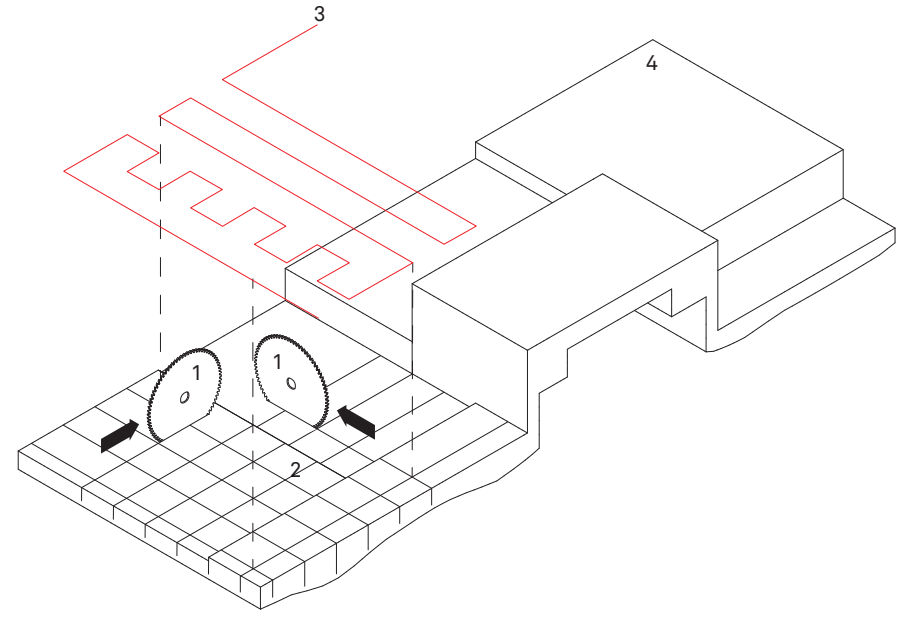


Fig. 25: Isometric view, close up. Volcanic rock underneath face being carved and ready to receive the pipes system